

## PROFILE

# COREMAP-CTI

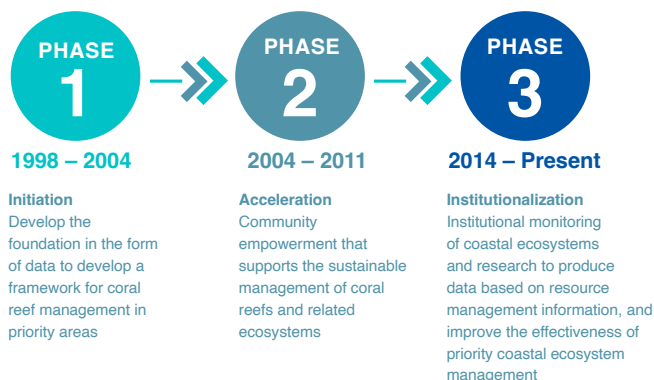
Coral Reef Rehabilitation and Management Program-Coral Triangle Initiative (COREMAP-CTI) is one of the real efforts from the Government of Indonesia to preserve marine and coastal resources while improving the welfare of coastal communities. This program strategy will produce innovation models of development, especially in the management of coastal and marine ecosystems in a sustainable manner and support efforts to address the impacts of climate change in the marine and fisheries sector.

COREMAP started in 1998 and exists as a response to global concerns over the degradation of the quality of coastal areas, especially coral reef ecosystems. This long-term program aims to protect, rehabilitate, and manage the sustainable use of coral reefs and related ecosystems in Indonesia which in turn will support the welfare of coastal communities.

In 2017 and 2019 the Government of Indonesia submitted a formal request to restructure the COREMAP-CTI project. The program restructuring is aimed at focusing more on strengthening the institutional capacity of monitoring and researching coastal ecosystems to produce evidence-based

information, as a response to the increasing need for research.

The results of the restructuring is to mandate Ministry of National Development Planning/National Development Planning Agency (Bappenas) through the Indonesia Climate Change Trust Fund (ICCTF), as the only national trust fund for climate change in Indonesia, to carry out activities funded by the Global Environment Facility (GEF) grant managed by the World Bank and the Asian Development Bank in increasing the effectiveness of priority ecosystem management through a strategic approach. The implementation of the COREMAP-CTI activities that carried out by ICCTF-Bappenas also in line with the function of Bappenas as an enabler in the integrated development of marine areas to produce innovative models of coastal development that can be replicated by other regions.



## COREMAP-CTI as Marine and Fisheries Development

### Enabling condition

Bappenas as an enabler for central and regional governments and community in the development of integrated marine conservation areas .

### Convergence Approach

Creating a participatory development platform with the principle of "THIS" (Thematic, Holistic, Inter-connected-spatial).

### Pilot Project

1. Conservation area management through strengthening community-based supervision and ecotourism.
2. Blended finance initiation as a funding innovation through the mobilization of public funds.
3. Fisheries resource management based on Fishery Management Areas (WPP) with superior commodities such as Tuna.

# COREMAP-CTI WORLD BANK



This project aims to conserve the coral reef as well as related vital ecosystems through improving the management effectiveness of MPA



## COMPONENT 3



Increasing the effectiveness of priority coastal ecosystem management

## 75% Blue Level

### INTERVENTION



Management effectiveness of MPA and conservation of endangered species



Integrated coastal zone planning



Community stewardship of coastal resources

### IMPLEMENTATION

1

Sustainable community use of Marine Protected Area in Raja Ampat.

2

Sustainable community use of Marine Protected Area in Savu Sea

3

Implementation of Three National Plans of Action for Threatened Species

4

Support to ICZM Implementation in Papua Barat

5

Strengthening Community Surveillance of Coastal Ecosystem Access Area Management of Fisheries Resources for Local Community

TOTAL FUNDS  
**US\$ 6,2 Million**

PROJECT PERIODE  
**JUNE 2019 - JUNE 2022**

### Sub-Grantee / Implementing Partner

1



Sustainable community use of Marine Protected Area in Raja Ampat



2



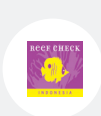
Sustainable community use of Marine Protected Area in Savu Sea



3



Implementation of Three National Plans of Action for Threatened species



4



Support to ICZM Implementation in Papua Barat



5



Strengthening Community Surveillance of Coastal Ecosystem in Savu Sea & Raja Ampat



6



Access Area Management of Fisheries Resources for Local Community in Savu Sea & Raja Ampat





**COREMAP-CTI with the World Bank grant funds are located in East Nusa Tenggara and West Papua as follows:**

- |  |   |   |   |
|--|---|---|---|
| <b>1</b> Marine National Park (TNP) of Savu Sea, East Nusa Tenggara Province | <b>2</b> Marine Nature Reserve (SAP) of Raja Ampat Islands, West Papua Province | <b>3</b> Marine Nature Reserve (SAP) of Western Part of Waigeo Islands, West Papua Province | <b>4</b> Regional Marine Conservation Area (KKPD) of Raja Ampat, Papua Barat Province |
|--|---|---|---|

## COREMAP-CTI ASIAN DEVELOPMENT BANK

“ This project aims to sustainably manage the coral reef in Lesser Sunda Seascape through enhanced capacity to manage coral reef ecosystems in MPA ”

### **1 Strengthening Coral Reef Management & Institution**

- Improving the implementation of marine protected area management plans
- Capacity development and training in coastal and marine management



1. Master Degree program
2. Short Term Training

### **2 Development of an Ecosystem-Based Resource Management Plan**

- Investment in community based ecosystem restoration / rehabilitation and monitoring



### **3 Sustainable Marine -Based Livelihoods Improvement**

- Sustainable fisheries and livelihoods supported in project area



### **4 Project Management**

- Monitoring and implementation of effective project management learning transfer



1. Knowledge product developed & disseminated
2. Project Management consultant

## 7 Grant Package to NGO and Consulting Firm

### Sub-Grantee / Implementing Partner

**Grant Package 1**  
PT. Trans Intra Asia  
joint venture with  
Yayasan Bahtera  
Nusantara

**Grant Package 2**  
PT. Duta Cipta  
Mandiri joint venture  
with PT. Cakra  
Buana Aghna  
and Gili Eco Trust

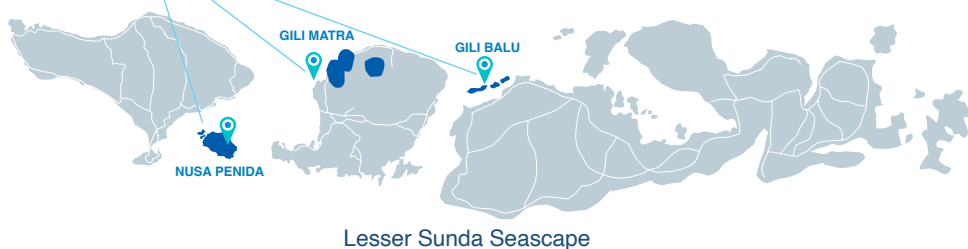
**Grant Package 3**  
PT. Cakra Buana  
Aghna joint venture  
with PT. Ciria  
Jasa Engineering  
Consultant and  
Konsepsi NTB

**Grant Package 4**  
Coral Triangle  
Center (CTC)

**Grant Package 5**  
PT. Duta Cipta  
Mandiri joint  
venture with PT.  
Cakra Buana Aghna  
and Gili Eco Trust

**Grant Package 6**  
PT. SUCOFINDO

**Grant Package 7**  
PT. GEOHETRANDES



## COREMAP-CTI with Asian Development Bank grant funds are located in Bali and West Nusa Tenggara as follows:

- 1** Regional Marine Conservation Area (KKPD) of Nusa Penida, Bali Province
- 2** Marine Tourism Park (TWP) of Gili Matra, Lombok, West Nusa Tenggara Province
- 3** Small Island Park (TPK) of Gili Balu, Lombok, West Nusa Tenggara Province
- 4** Lesser Sunda Seascape

## ACHIEVEMENTS

### Village Engaged **WB**

Total	92
West Papua	50
NTT	42

### Village Engaged **ADB**

Total	13
Bali	8
NTB	5

### Beneficiaries and Asset Recipient **WB** **ADB**

Regional Government	6	5
Community Group	63	14
NTT	33	-
NTB	-	11
Bali	-	3
West Papua	30	-

### Pokmaswas Assistance **WB** **ADB**

23	7
----	---

### Infrastructure & Asset **WB**

Information Center	4	Solar Power Plant	9 Modules
Surveillance Tower	7	Surveillance Boat	9
Manta Ray Monitoring Station	2	Surveillance Equipment	22 Packages
Cetacean Monitoring Station	1	Home Industry Equipment	6 Packages
Floating Net Cage	2	Bycatch Prevention Equipment	2 Packages
Hiking Track	1	Online Application & Website	3
Floating Jetty	1	Mobile Cold Storage	8

### ADB

Information Center	3	Surveillance Equipment	6 Packages
Watch Tower	4	Home Industry Equipment	4 Packages
Bird Watch Monitoring Station	1	Bycatch Prevention Equipment	2 Packages
Mangrove Tracking	1	Online Application & Website	2
Mooring Buoy	18	Mobile Cold Storage	7

### Training **WB** **ADB**

Number of Training	19	27
Number of Modul	23	3

- Modul for rehabilitation training
- Modul for training
- modul for surveillance training
- Modul for bycatch handling

Participants	552	324
--------------	-----	-----

Female	238	298
--------	-----	-----

Male	314	558
------	-----	-----

### Ecosystem Rehabilitation Area **WB** **ADB**

Mangrove (m <sup>2</sup> )	10.000 m <sup>2</sup>	2,7972 Ha
Seagrass (Seed clumps)	1521 rumpun bibit	-
Coral Reef (Coral fragments)	1600 fragmen karang	13.730 fragmen karang

## Indonesia Climate Change Trust Fund

Lippo Kuningan 15th Floor  
Jl. H.R. Rasuna Said Kav.B-12, Jakarta 12940, Indonesia.

Phone : (+62 21) 80679386 (Hunting)

Fax : (+62 21) 80679387

Email : secretariat@icctf.or.id



www.icctf.or.id

ICCTFOfficial

Indonesia Climate Change Trust Fund

@ICCTF\_ID

secretariat@icctf.or.id