

# Marine Protected Area (MPA) **NUSA PENIDA**



## Brief Background:

Nusa Penida District, Klungkung Regency, Bali Province, has high marine biodiversity and is part of the world's coral reef triangle area. The district, which consists of three main islands, namely Nusa Penida, Nusa Ceningan, and Nusa Lembongan, has 1,419 hectares of coral reefs, 230 hectares of mangrove forests, and 108 hectares of seagrass beds (TNC, 2009).

In the waters of Nusa Penida, there are Sunfish (*Mola mola*), which is an iconic species of Nusa Penida, even the island of Bali. This Mola mola fish has an average size of 2 meters and appears in the waters of Nusa Penida around July – September to rid itself of various parasites with the help of reef fish as well as sunbathing to get sunlight to adjust body

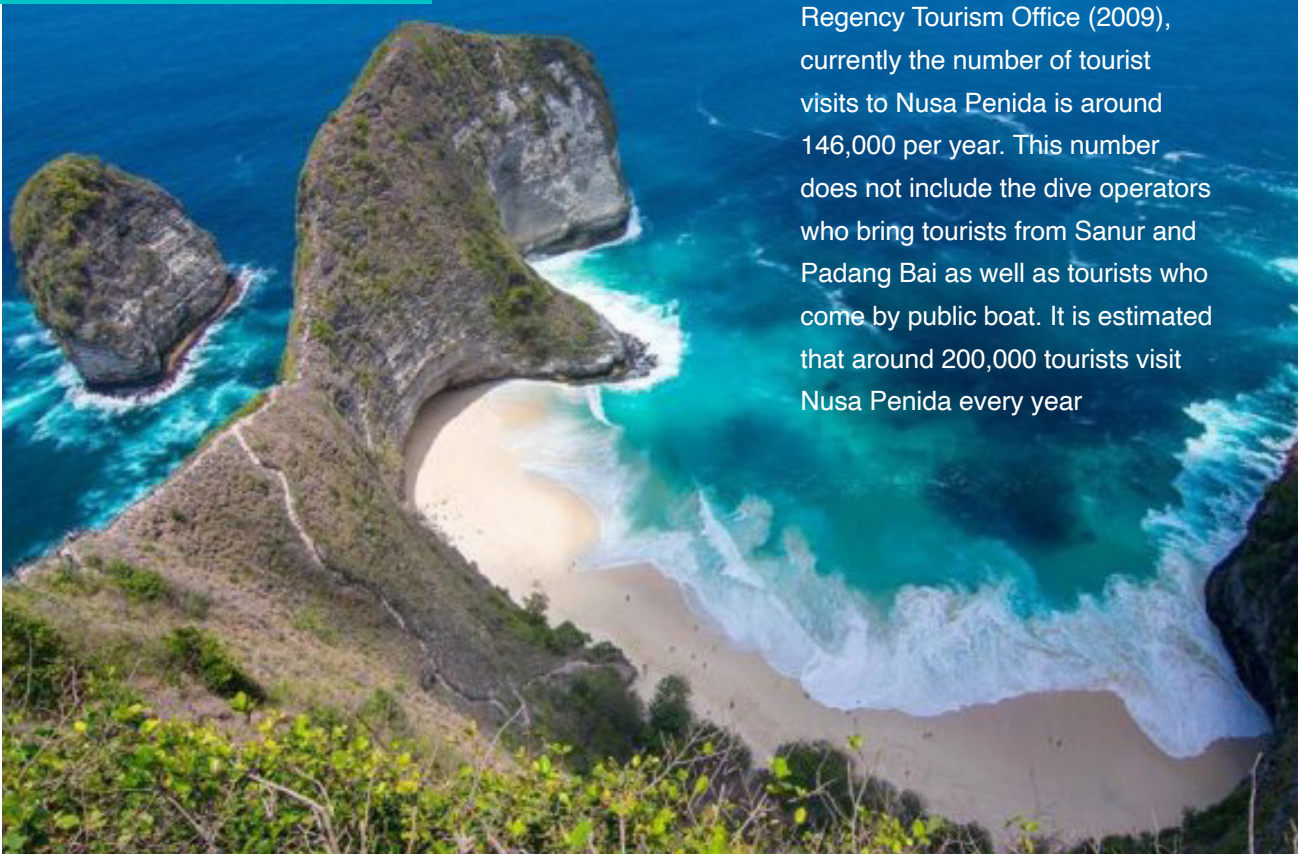
temperature due to being in the sea. deep water for a long time. There are several “cleaning station” locations for Mola mola fish in the waters of Nusa Penida.



Figure 1: Mola mola Fish in Nusa Penida

# Coastal and Marine Potential of Nusa Penida

## A. Marine Tourism



Based on data from the Klungkung Regency Tourism Office (2009), currently the number of tourist visits to Nusa Penida is around 146,000 per year. This number does not include the dive operators who bring tourists from Sanur and Padang Bai as well as tourists who come by public boat. It is estimated that around 200,000 tourists visit Nusa Penida every year

## B. Fishing



The majority of fishermen in Nusa Penida catch types of consumption fish such as tuna, skipjack, snapper, grouper, mackerel, mackerel and shark. Based on data from the Department of Animal Husbandry, Fisheries and Marine Affairs (DPPK) of Klungkung Regency, the production of capture fisheries in Nusa Penida is around 93,713 tons/year (2007), 103,378 tons/year (2008) and 105.469 tons/year (2009).

## C. Seaweed Cultivation



Seaweed is one of the mainstays of fishery production for the people of Nusa Penida, especially for the type of *Euchema spinosum*. Seaweed cultivation has developed since 1990 with the basic planting method (*tancap*), until now it has spread to several parts of the coast in Nusa Lembongan, Nusa Ceningan and Nusa Penida. The trend that exists from year to year is that seaweed cultivation has developed significantly because ecologically the waters in the area are suitable for seaweed and the like.

## D. Marine Life Found



Mola mola (sunfish)



Manta



Shark



Sea Turtle



Dugong



Dolpin and Whale

## Main Purpose of the Establishment of the Nusa Penida MPA



Protection of marine and coastal biodiversity

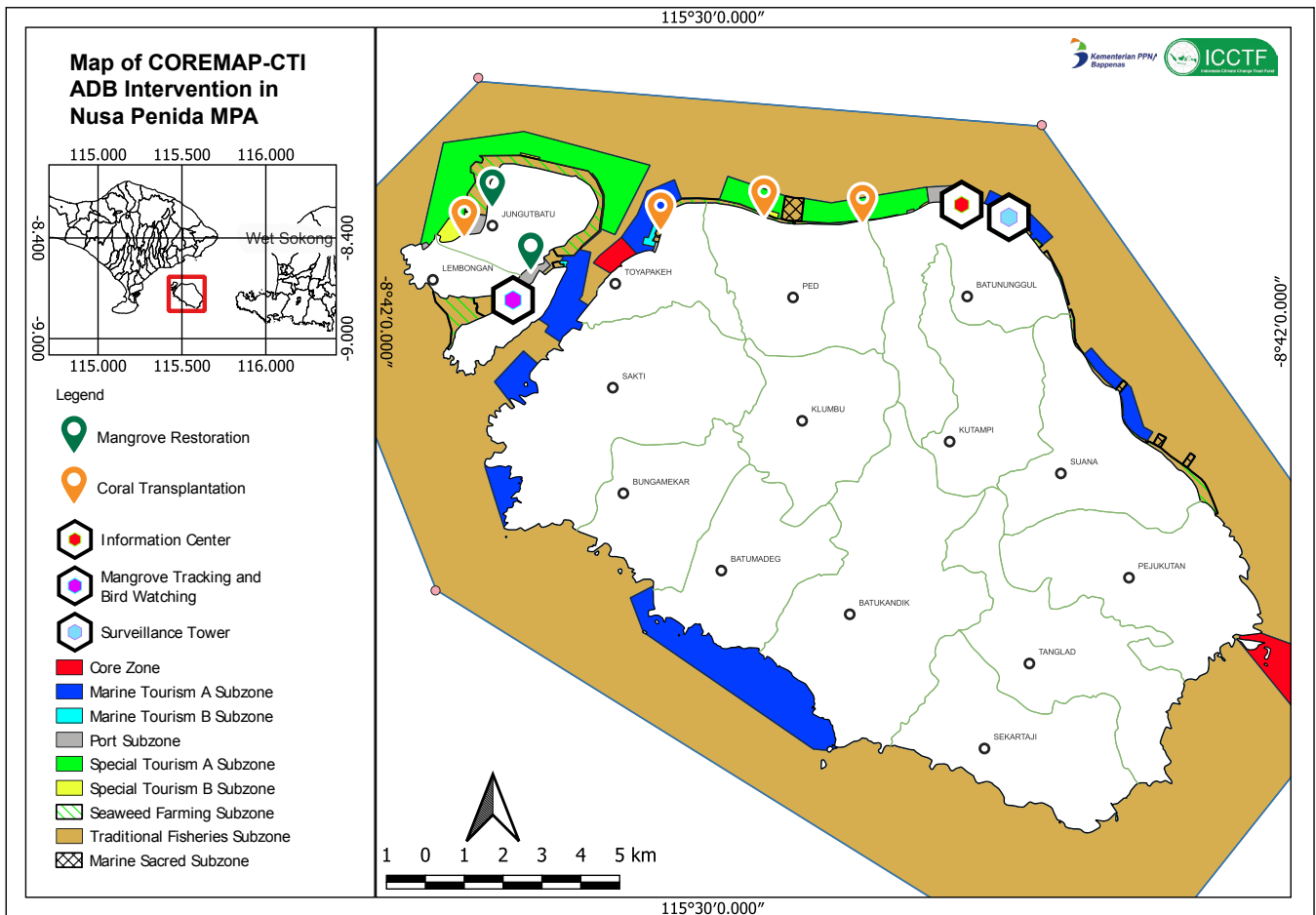


Sustainable marine tourism



Sustainable fisheries

## Map of Project Based Activities, COREMAP-CTI



# Overview COREMAP CTI Activity

## NUSA LEMBONGAN



ADB's COREMAP CTI program in Nusa Lembongan is carried out by the CTC (Coral Triangle Center). The activity consist of coastal ecosystem rehabilitation programs and livelihood improvement, which have been carried out including:

### Seaweed Home Industry Improvement

Four community groups have been selected and have received training on seaweed processing (manufacture of straws and packaging) and business analysis of processed seaweed products.



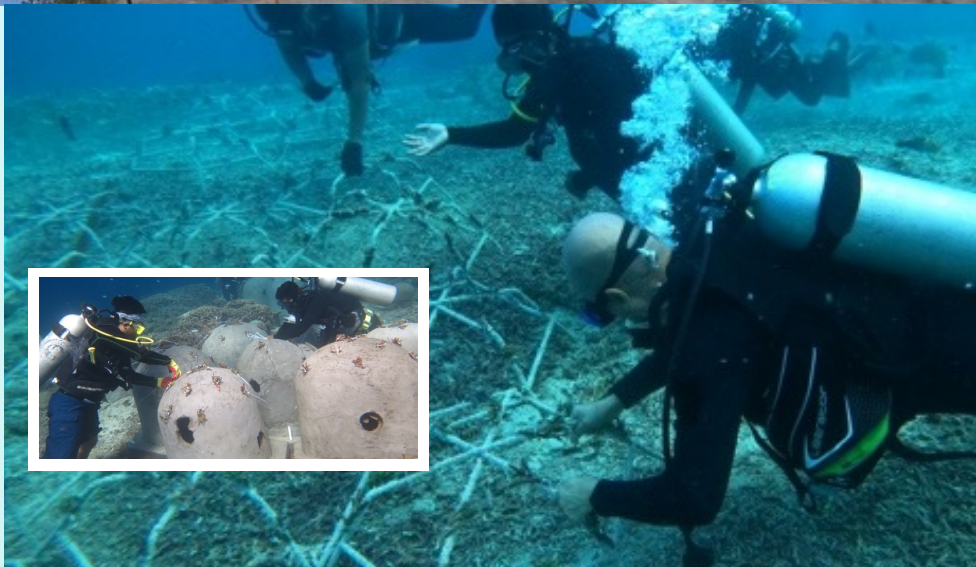
### Mangrove Rehabilitation

20,000 mangrove seedlings of 18 species have been planted and nursery beds mangroves have been established.



### Coral Reef Rehabilitation

A total of 40 fish domes have been constructed in Suana, as well as a concrete mask point structure and Gajah mina sculptures have been made in Lembongan and 200 Reef stars have been completed in Ped Village.





## Development of Mangrove Tracking and Bird watching tower

A 100 meter length of mangrove tracking with 12 meter height of the bird watching tower are building in the Ceningan. Those are infrastructure for implementation of ecotourism scheme to support mangrove-based ecotourism for the community. Development of these infrastructure has complied with ADB Safeguard principle (Safeguard Policy Statement, 2009)



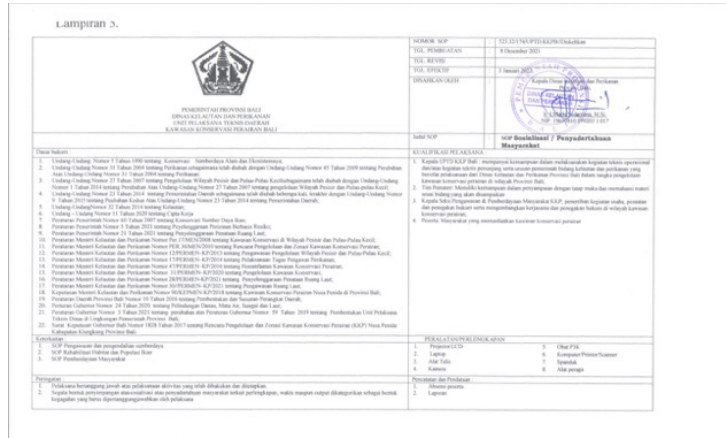
## NUSA PENIDA

ADB's COREMAP CTI program in Nusa Penida is carried out by implementing partner (GP) 1 (PT. Trans Intra Asia Joint Venture with Bahtera Nusantara Foundation (Banur Foundation) and Coral Triangle Center (CTC), the programs that have been carried out include:

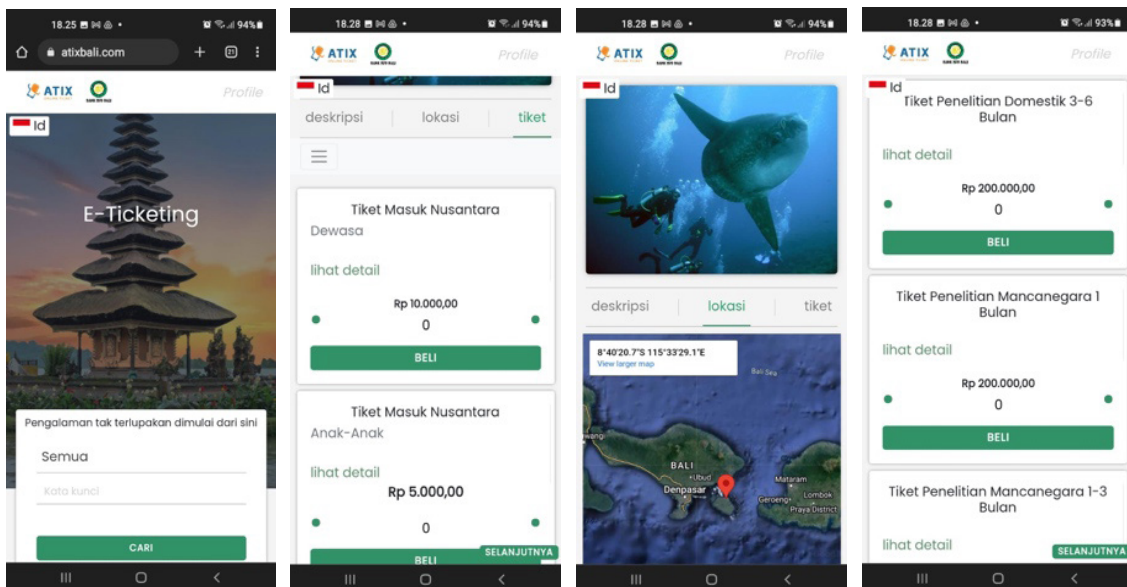
- An academic manuscript has been made to support ecotourism for Mola mola.



- 2 standard operating procedures (SOPs) have been made: public awareness SOPs and technical SOPs for permits to enter the Nusa Penida waters conservation area.



- Development of the Tourist Management System (TMS) for the Nusa Penida conservation area which is integrated with the application built by the Bali Provincial Government.



● **Development of Infrastructures:**

- Tourism Information Center in Batununggul, Nusa Penida. This infrastructure aims to support provincial government in providing information related to sustainable tourism in Nusa Penida Marine Conservation Area.



- Surveillance Post in Batununggul, Nusa Penida. This infrastructure aims to support the provincial government's to monitors the utilization of the Nusa Penida conservation area from destructive activities through POKMASWAS groups.



## Expected Project Results:



**Support for Ecosystem-Based Resource Management Plans** and Sustainable Marine-Based Livelihoods in the Nusa Penida Conservation Area



**Support For MPA Management** and ETP NPOA Implementation In Nusa Penida



**Knowledge management,** safeguards management, and monitoring and evaluation



**Strengthen Community Surveillance Group,** provide training and support equipment for sea patrol

Direktorat Kelautan dan Perikanan,  
Jl. Taman Suropati No 2. Jakarta

**Indonesia Climate Change Trust Fund**

Lippo Kuningan 15th Floor

Jl. H.R. Rasuna Said Kav.B-12, Jakarta 12940, Indonesia.

Phone : (+62 21) 80679386 (Hunting)

Fax : (+62 21) 80679387, Email : secretariat@icctf.or.id



www.icctf.or.id

Indonesia Climate Change Trust Fund

ICCTFofficial

@ICCTF\_ID

secretariat@icctf.or.id